

# Bruce Peninsula Biosphere Association

## Our Local Commitment



- Community-based charitable, organization established in 2002
- Implementing the three concepts of UNESCO World Biosphere Reserves:

Conservation

Sustainable Economic Development

Community Capacity



# Six Streams Restoration Project

## Six Streams Initiative

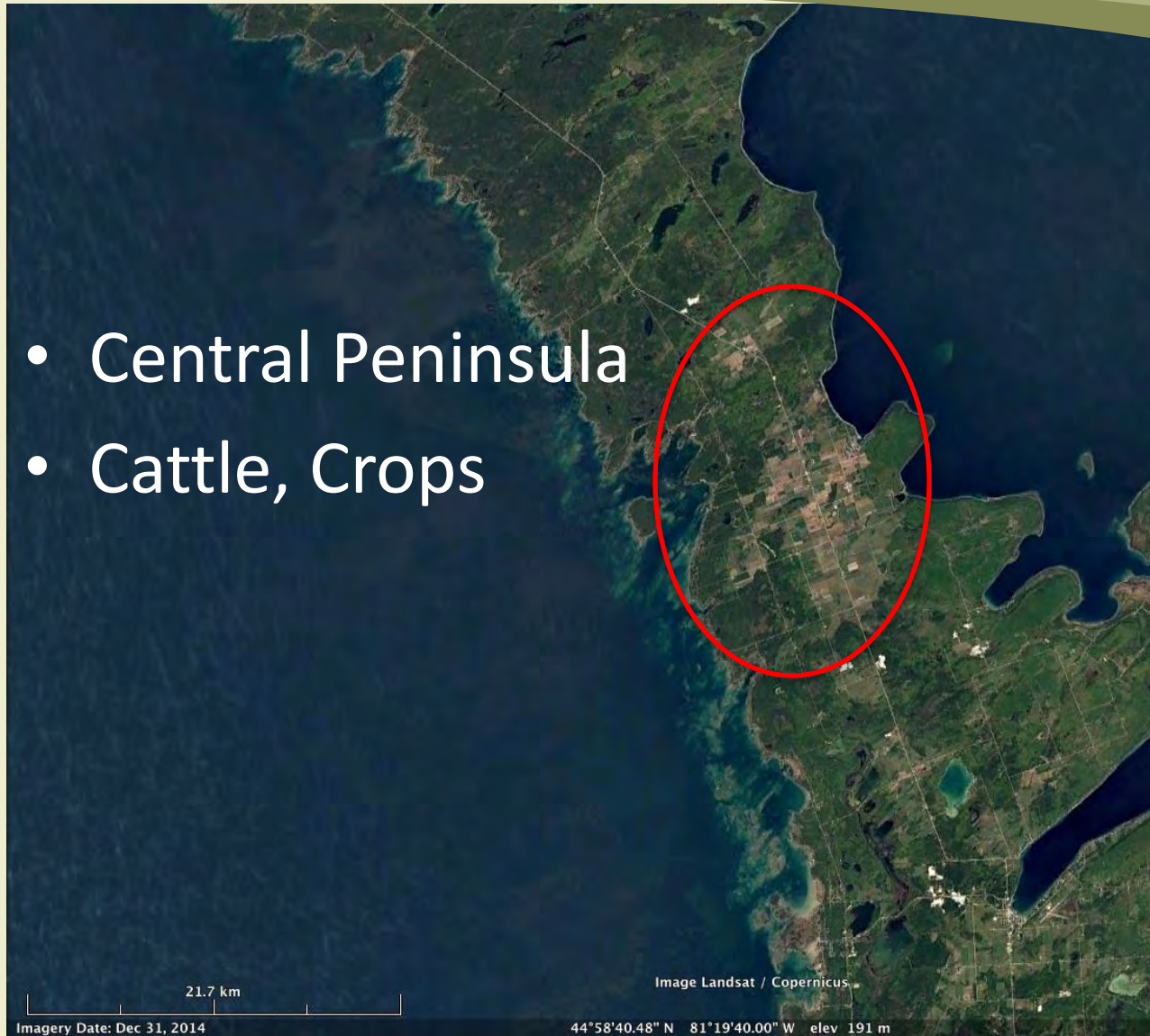
- Four Sub-Watersheds
- Improving water quality
- Tackling residential and farming sources of nutrients and soil erosion





# Agricultural Land Use

- Central Peninsula
- Cattle, Crops









# Residential Land Use

- Homes
- Cottages



3.88 km

Image Landsat / Copernicus  
Image © 2018 CNES / Airbus



# Residential Land Use



- Coastline
- Stream Shoreline
- Inland Lakes



# Six Streams Karst Drainage

- Protecting unique spring features



# Six Streams Restoration Project

## Six Streams Initiative

- 5 years water sampling
- 2015 caffeine testing





# 2015 Caffeine Testing

Site	Caffeine
Black Creek	0.0129 $\mu\text{g/L}$
Judges Creek	0.0003 $\mu\text{g/L}$
Little Lake	0.007 $\mu\text{g/L}$
Stokes River	0.012 $\mu\text{g/L}$
Old Womans River	0.0216 $\mu\text{g/L}$
Swan Lake Drain	0.0158 $\mu\text{g/L}$
Little Pike Creek	0.0286 $\mu\text{g/L}$



# Six Streams Septic Systems Project

- Supported by MOECC 2016-2018
- Yearly target areas
- Homes located by surface water
- Older homes, no recent maintenance



# Six Streams Septic Systems Project

## Three Pronged Approach

- Education - Workshops



# Six Streams Septic Systems Project

## Three Pronged Approach

- Education – Workshops
- Septic System Pump-out and Inspection





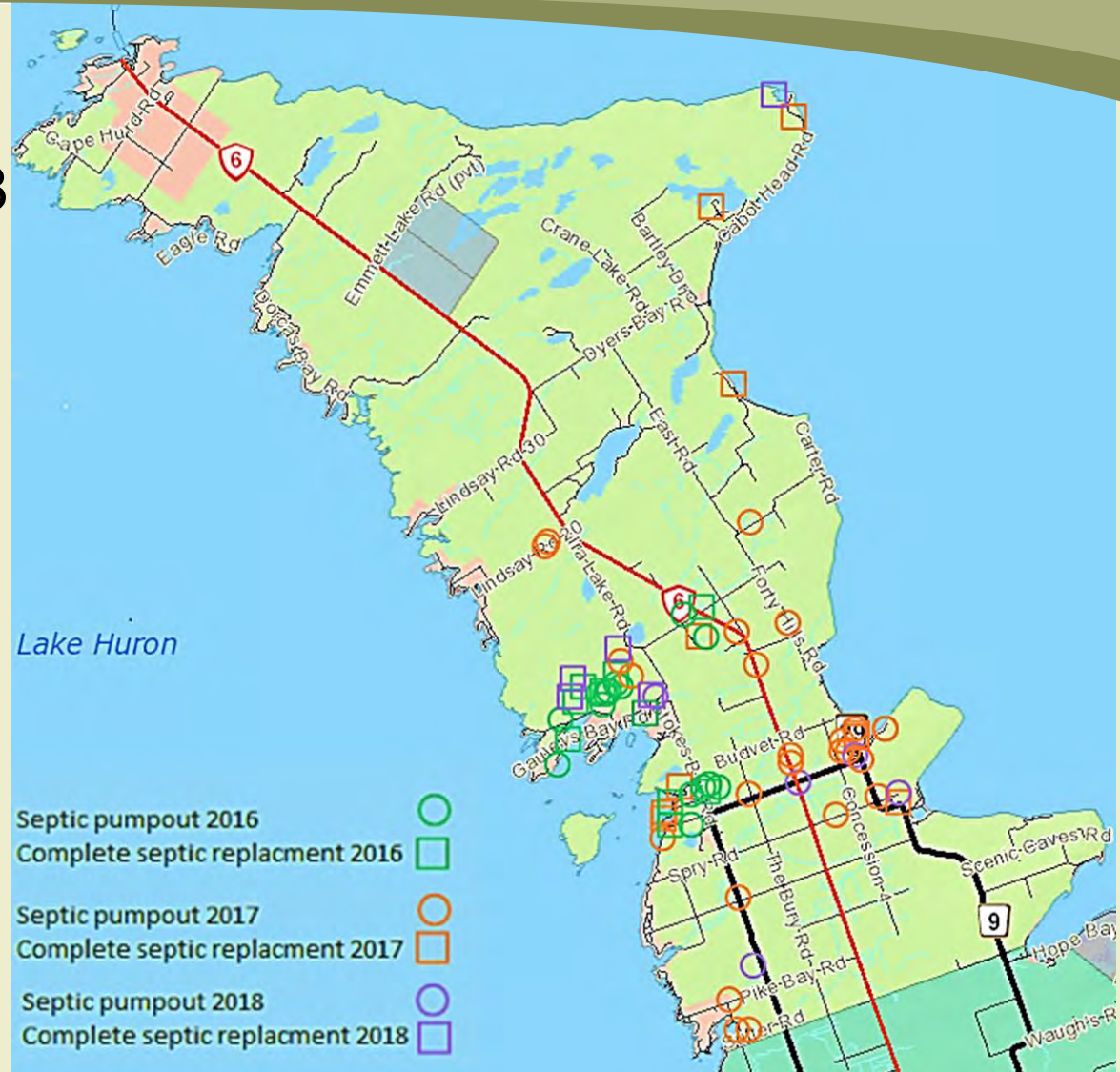
# Six Streams Septic Systems Project

## Three Pronged Approach

- Education – Workshops
- Septic System Pump-out and Inspection
- Incentive for Replacement of Failed System

# Six Streams Septic Systems Project

- ✓ 8 workshops, 1 more planned 2018
- ✓ 60 pump-outs and inspections, 30 more planned
- ✓ 32 system replacements, with 8 more planned
- ✓ Caffeine re-testing planned for late August





# Bruce Peninsula Biosphere Association

A Biosphere Reserve Community on the Niagara Escarpment

